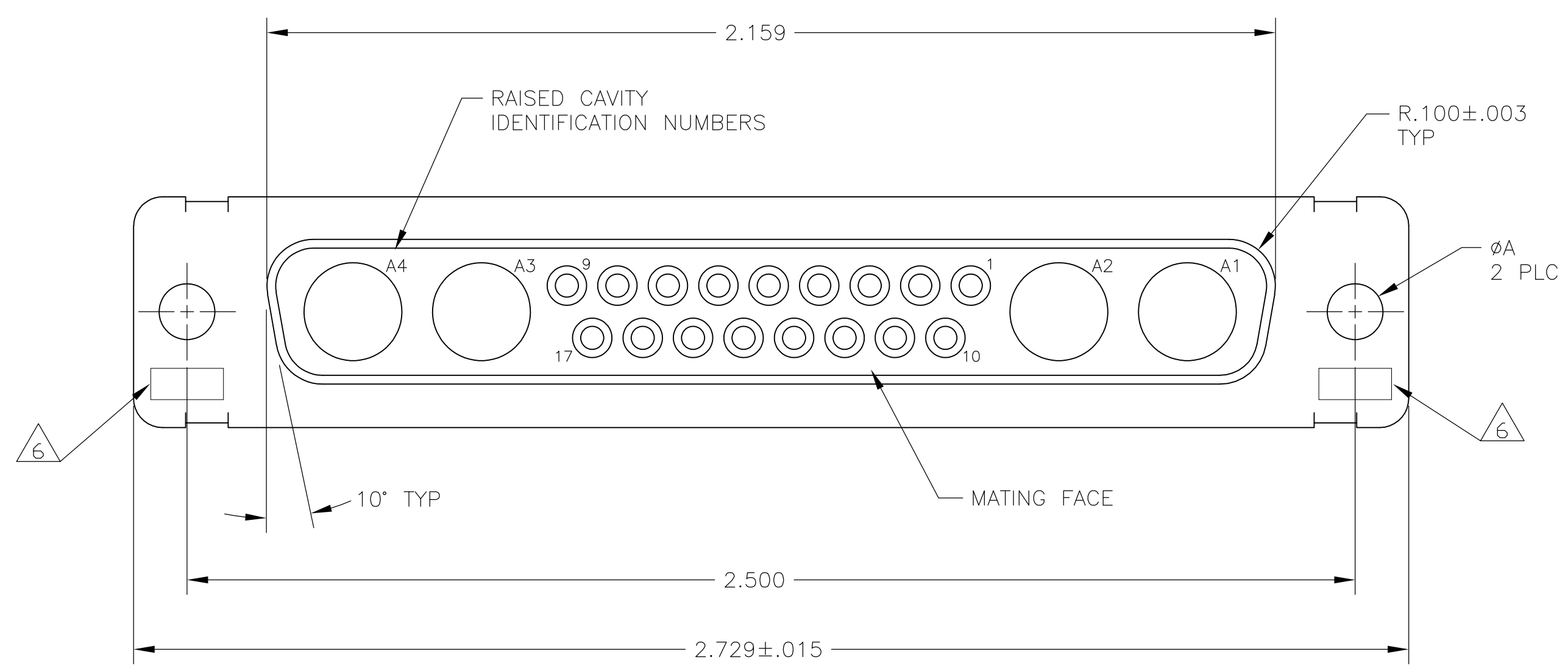
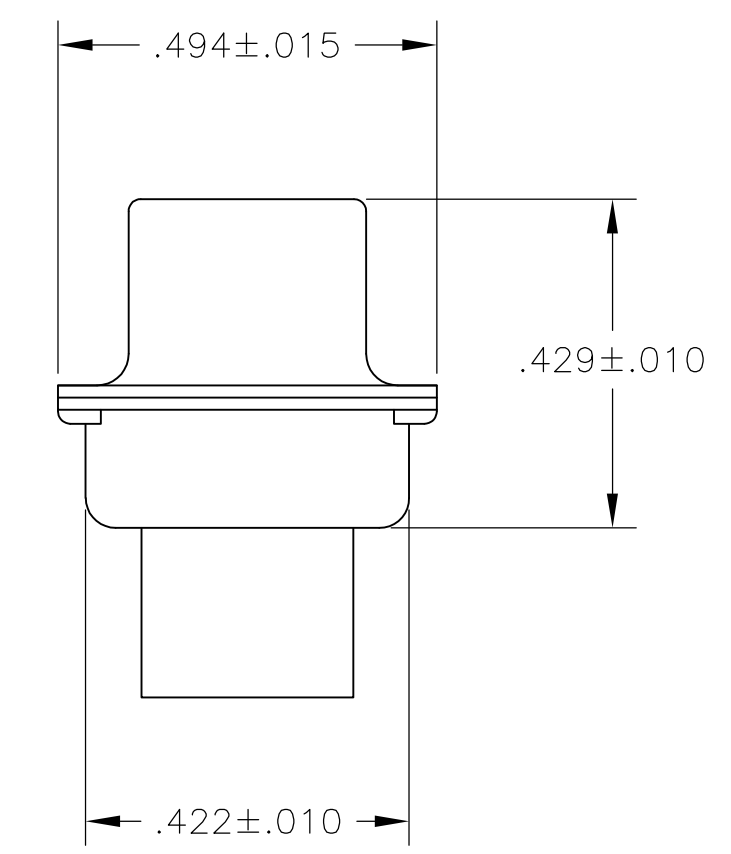
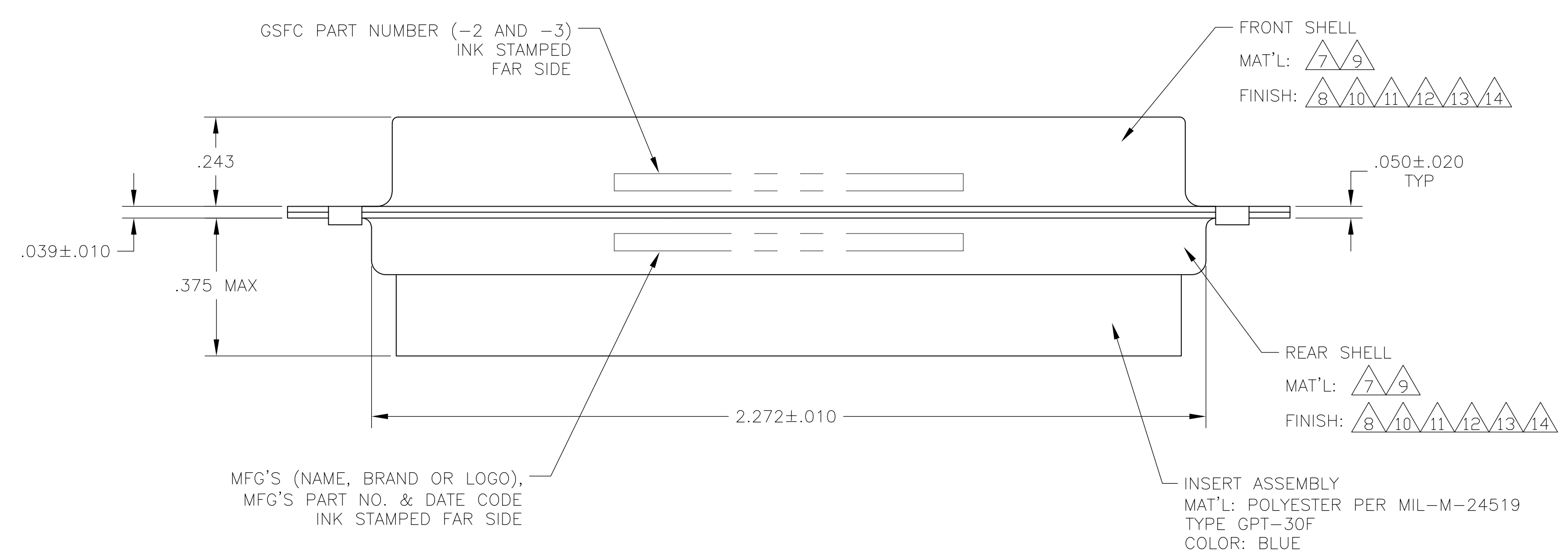


LOC	DIST	REVISIONS				
DF	DO	REV	DESCRIPTION	DATE	DRN	APVD
		K	REV PER ECO 05-014840	20JAN06	BL	CT
		L	REV PER ECO-08-018752	21AUG08	PK	BW

1. THIS RECEPTACLE WILL MATE WITH ANY 21C4, SIZE 4 PLUG IN AMPLIMITE SERIES.
2. MAXIMUM WIRE INSULATION TO BE USED WITH THIS RECEPTACLE IS  $\phi.072$ .
3. RETENTION CLIPS (17) ARE INCLUDED IN INSERT ASSEMBLY.
4. THIS CONNECTOR ACCEPTS SIZE 20 SOCKET CONTACTS, NOT PROVIDED, IN CAVITIES 1 THRU 17.
5. CAVITIES A1 THRU A4 ACCEPTS SIZE 8 POWER, OR COAX SOCKET CONTACTS, NOT PROVIDED. RIGHT ANGLE COAX CONTACTS WILL NOT SEAT IN THIS CONNECTOR.



- △6 UL/CSA DESIGNATION STAMPED IN THIS AREA, OPTIONAL.
- △7 MATERIAL: STEEL PER ASTM-A-109.
- △8 FINISH: CADMIUM PLATED PER QQ-P-416, TYPE II, CLASS 2.
- △9 MATERIAL: BRASS PER ASTM-B-36.
- △10 FINISH: GOLD PER MIL-G-45204 TYPE II, GRADE C, CLASS 1 OVER COPPER PER MIL-C-14550, CLASS IV.
- △11 FINISH: TIN PER ASTM-B-545 .000200 MIN THK OVER COPPER PER AMS2418 .000100-.000200 THK OR TIN-LEAD 93/7 .000200 MIN THK OVER COPPER PER AMS2418 .000100-.000200 THK.
- △12 FINISH: BRIGHT TIN PER ASTM-B-545 .000400-.000550 THK OVER COPPER PER AMS2418 .000050 MIN THK.
- △13 FINISH: TIN PER ASTM-B-545 .000200 MIN THK OVER COPPER PER AMS2418 .000100-.000200 THK.
- △14 FINISH: ZINC PLATE PER ASTM-B-633 .000200-.000400 THK WITH SUPPLEMENTARY CHROMATE (Cr3+).



△7 △13	.120	-	5-212534-4
△7 △14	.120	-	5-212534-1
△7 △12	.120	-	212534-5
△7 △11	.120	-	212534-4
△9 △10	.154	311P405-18S-B-15	212534-3
△9 △10	.120	311P405-18S-B-12	212534-2
△7 △8	.120	-	212534-1
REMARKS	ØA	GSFC P/N	PART NO.

THIS DRAWING IS A CONTROLLED DOCUMENT.

DW	C.C.THOMAS	21-JAN-88	Tyco Electronics Corporation Harrisburg, PA 17105-3608																													
CHK	A.EMADI	27-JAN-88																														
APP'D	A.EMADI	27-JAN-88																														
DIMENSIONS: INCHES		TOLERANCES UNLESS OTHERWISE SPECIFIED:																														
<table border="1"> <tr><td>0 PLC</td><td>±</td><td>-</td></tr> <tr><td>1 PLC</td><td>±</td><td>-</td></tr> <tr><td>2 PLC</td><td>±</td><td>-</td></tr> <tr><td>3 PLC</td><td>±</td><td>.005(0.13)</td></tr> <tr><td>4 PLC</td><td>±</td><td>.005(0.13)</td></tr> <tr><td>ANGLES</td><td>±</td><td>0°30'</td></tr> <tr><td>FINISH</td><td>-</td><td>-</td></tr> </table>		0 PLC	±	-	1 PLC	±	-	2 PLC	±	-	3 PLC	±	.005(0.13)	4 PLC	±	.005(0.13)	ANGLES	±	0°30'	FINISH	-	-	<table border="1"> <tr> <th>SIZE</th> <th>CAGE CODE</th> <th>DRAWING NO</th> <th>RESTRICTED TO</th> </tr> <tr> <td>A1</td> <td>00779</td> <td>212534</td> <td>-</td> </tr> </table>		SIZE	CAGE CODE	DRAWING NO	RESTRICTED TO	A1	00779	212534	-
0 PLC	±	-																														
1 PLC	±	-																														
2 PLC	±	-																														
3 PLC	±	.005(0.13)																														
4 PLC	±	.005(0.13)																														
ANGLES	±	0°30'																														
FINISH	-	-																														
SIZE	CAGE CODE	DRAWING NO	RESTRICTED TO																													
A1	00779	212534	-																													
MATERIAL		CUSTOMER DRAWING																														

RECEPTACLE ASSEMBLY  
 AMPLIMITE 21C4  
 SIZE 4, SERIES 109, COAX MIX

SCALE 4:1 SHEET 1 OF 1 REV L